

Transfer Electromechanical Relay Latching Switch, +COM, DC to 43 GHz, 10W, 12VDC, 2.92mm

The FMSW6579 is a Transfer electromechanical relay switch that operates across a wideband frequency range from DC to 43 GHz and can handle 10W of average power in a break before make condition. The 50 Ohm design supports a positive common (+COM) biasing configuration and features a Latching Actuator with a 2 million lifecycle rating. The Latching Actuator magnetically latches in place after the control voltage is removed. For power sensitive applications, this is the best actuator option. Impressive typical performance includes 0.5 dB insertion loss and isolation greater than 85 dB. This switch requires 12 Vdc bias voltage and operates over a temperature range of -25°C to +65°C. The rugged and compact package assembly supports 2.92mm female connectors and solder terminal pins for DC control. And for highly reliable operation, the model is guaranteed to meet MIL-STD-202 environmental test conditions for shock and random vibration.

Electrical Specifications (TA = +25°C, DC Voltage = 12 Vdc)

Switch Type Transfer
 Actuator Type Latching

| Description | Min | Typ | Max | Units |
|------------------------------|-----|-------|-------|-------|
| Frequency Range | DC | | 43 | GHz |
| Operating Voltage | 11 | 12 | 13 | Volts |
| Actuating Current @ 12 Volts | | 300 | | mA |
| VSWR | | 1.5:1 | 1.8:1 | |
| Insertion Loss | | 0.5 | 1 | dB |
| Isolation | 50 | 85 | | dB |
| Switching Time | | 20 | | ms |

Performance by Frequency

| Description | F1 | F2 | F3 | F4 | F5 | Units |
|---------------------|--------|----------|-------------|-----------|----|-------|
| Frequency Range | DC - 6 | 6 - 12.4 | 12.4 - 26.5 | 26.5 - 43 | | GHz |
| VSWR, Max | 1.2:1 | 1.3:1 | 1.4:1 | 1.8:1 | | |
| Insertion Loss, Max | 0.2 | 0.4 | 0.7 | 1 | | dB |
| Isolation, Min | 85 | 80 | 65 | 50 | | dB |

Mechanical Specifications

Size
 Length 2.05 in [52.07 mm]
 Width/Diameter 1.5 in [38.1 mm]
 Height 0.52 in [13.21 mm]
 Weight 0.12 lbs [54.43 g]

Connectors

RF Connector Type 2.92mm Female
 Control Connector Solder Terminals



Features:

- Transfer Electromechanical Relay Switch
- DC to 43 GHz Frequency Range
- Latching Actuator
- Positive Common (+COM) Configuration
- 2M Lifecycle Rating
- Insertion Loss 0.5 dB typ
- Isolation > 85 dB typ
- VSWR as low as 1.2:1 max
- Solder Terminal Pins for DC Control
- 12 Volt DC Bias
- 2.92mm Female Connectors
- -25°C to +65°C Operating Temperature
- 10 Watt Average Power Handling
- 50 Ohm Design
- Hot Switching Capability - Consult Factory
- S-Parameter Data available upon request
- Rugged Design meets Mil-STD-202 Test Conditions

Applications:

- Aerospace & Defense
- Test & Measurement
- Microwave Radio Systems
- Military & Commercial Communication Systems
- Research & Development
- SATCOM
- Wireless Communications
- Enterprise
- IoT

Fairview Microwave
 301 Leora Ln., Suite 100
 Lewisville, TX 75056
 Tel: 1-800-715-4396 / (972) 649-6678
 Fax: (972) 649-6689
www.fairviewmicrowave.com
sales@fairviewmicrowave.com

Environmental Specifications

Temperature

Operating Range -25 to +65 deg C
Storage Range -55 to +100 deg C

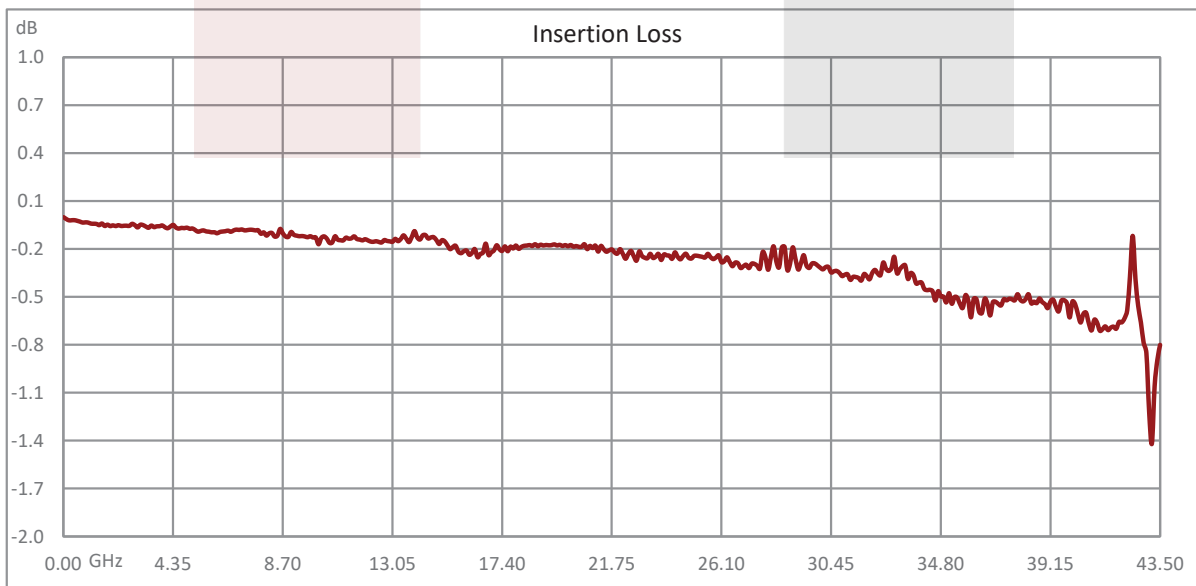
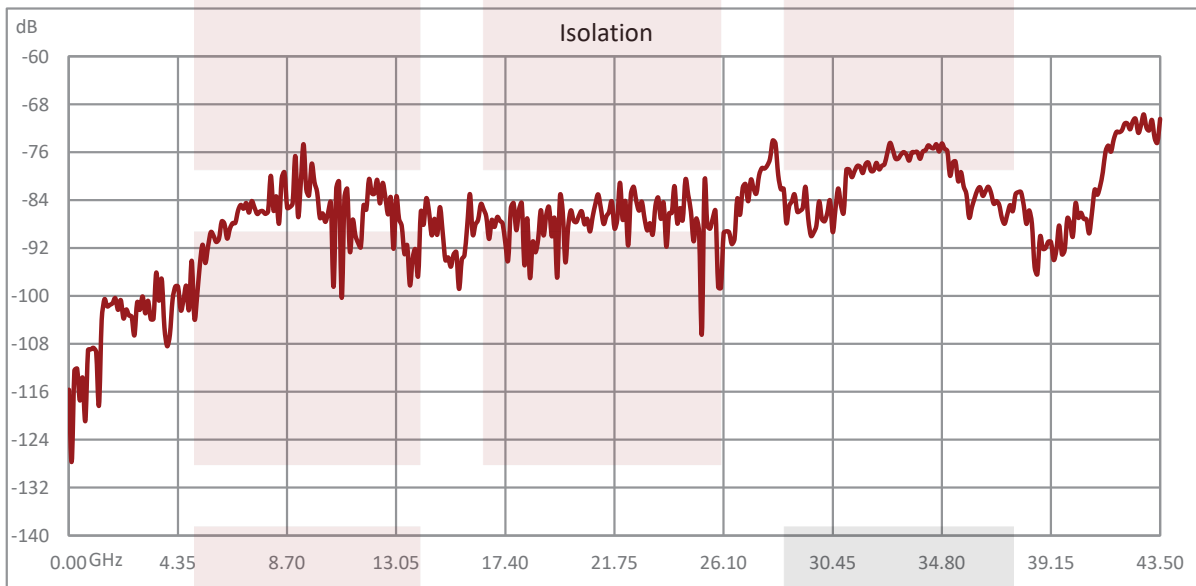
Shock MIL-STD-202 Method 213, Condition D, 500G (non oper)
Vibration MIL-STD-202 Method 204, Condition D, 10G RMS (non oper)

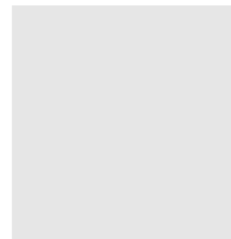
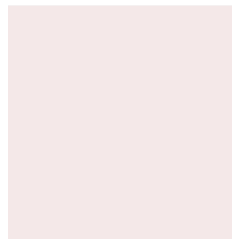
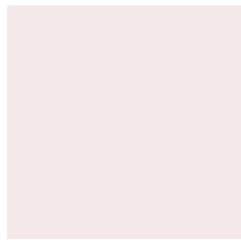
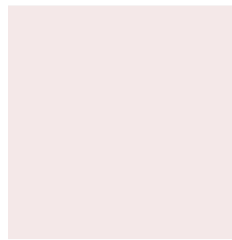
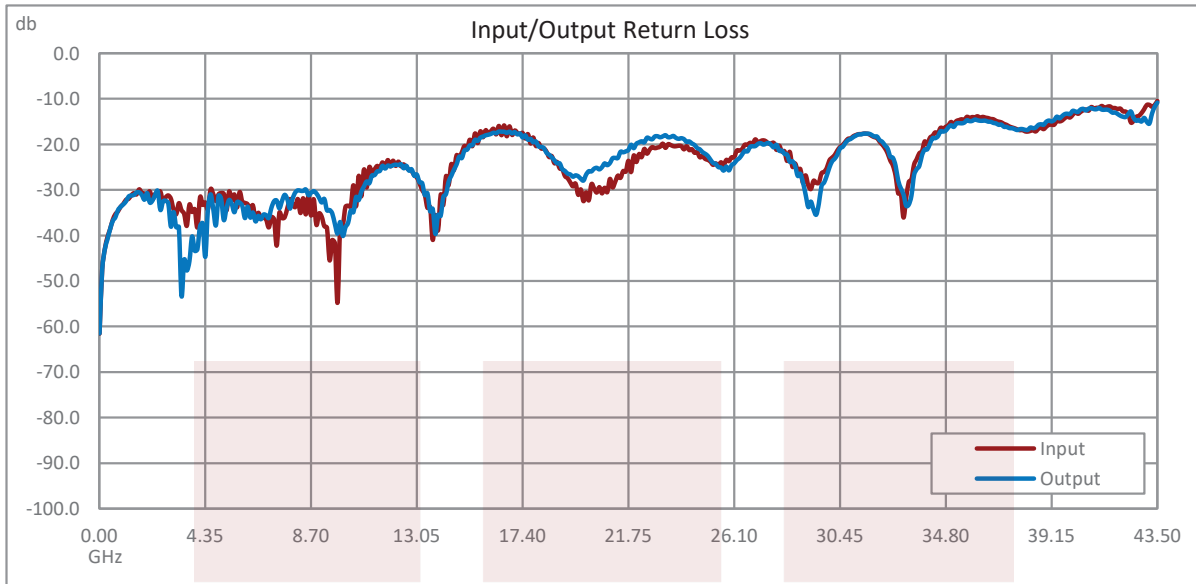
Compliance Certifications (see [product page](#) for current document)

Plotted and Other Data

Notes:

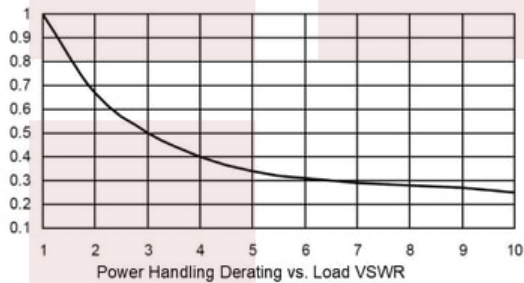
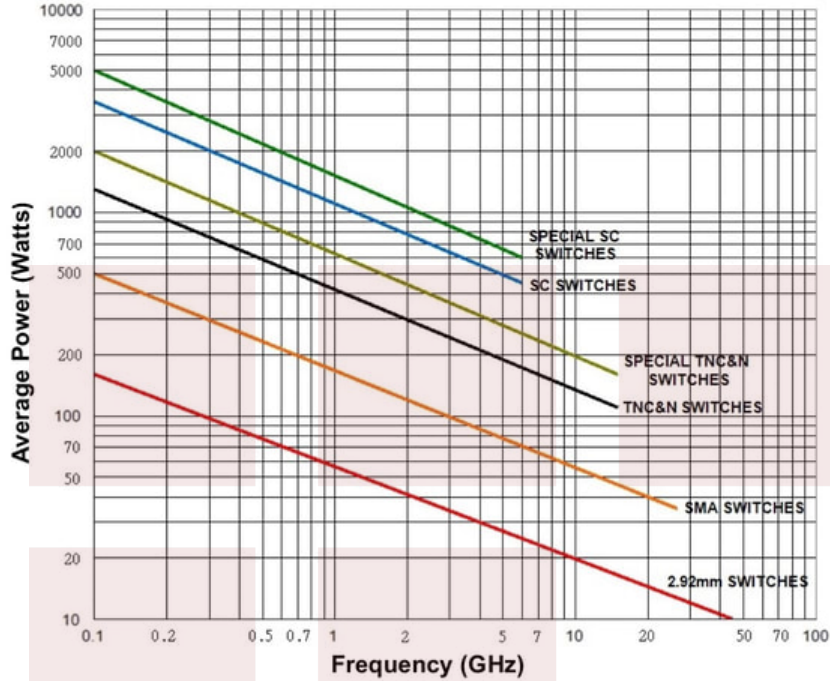
Typical Performance Data





Power Handling vs. Frequency

Power Handling vs. Frequency



Power handling chart and derating curves based on the following conditions:

- Ambient temperature: 40°C or less
- Altitude: Sea level
- Load VSWR: 1.20:1 Maximum
- Relative Humidity: 40-50%
- Cold switching: RF signal off

Note: specifications subject to change without notice

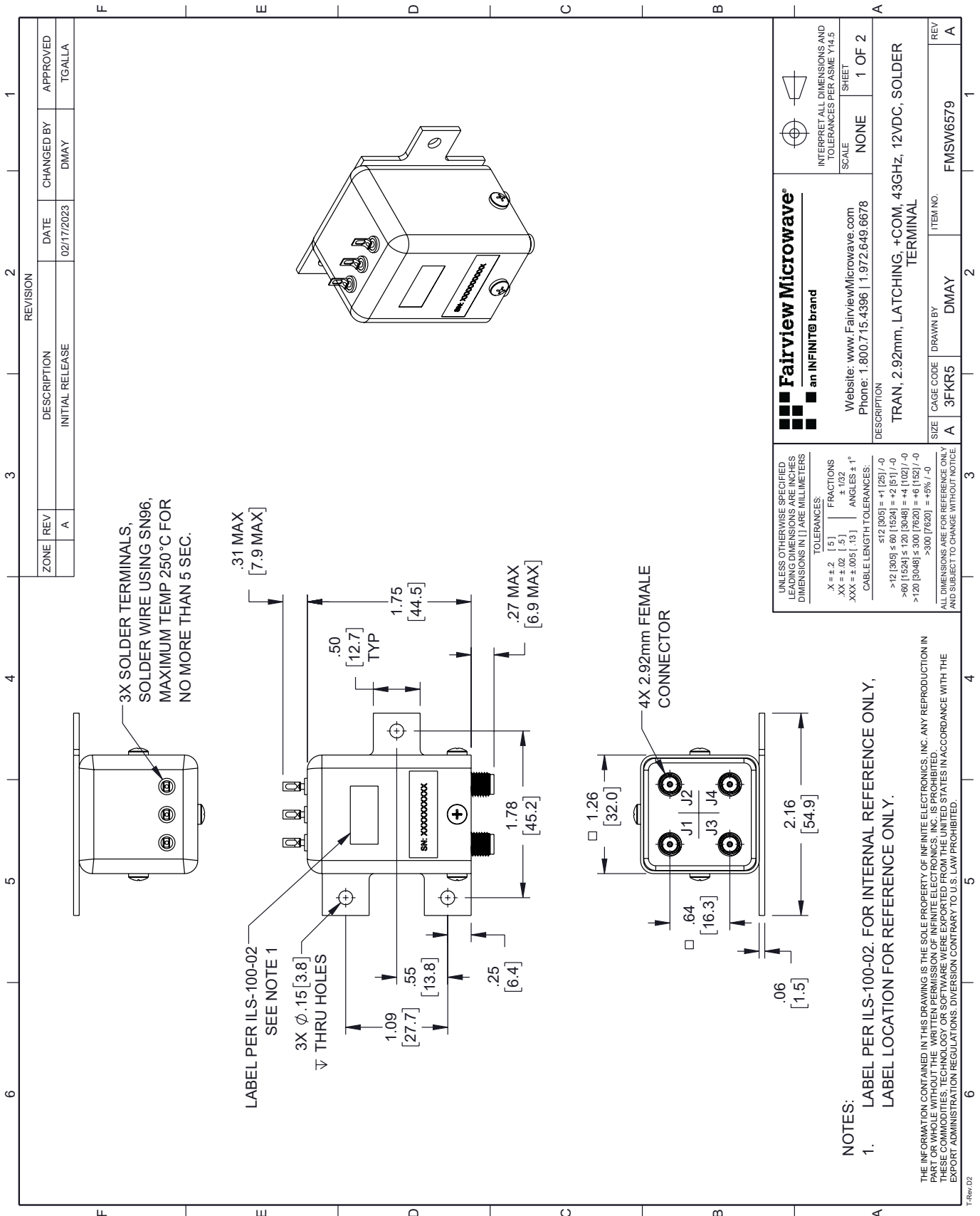
Transfer Electromechanical Relay Latching Switch, +COM, DC to 43 GHz, 10W, 12VDC, 2.92mm from Fairview Microwave is in-stock and available to ship same-day. All of our RF/microwave products are available off-the-shelf from our ISO 9001:2008 certified facilities in Lewisville, Texas. Fairview Microwave is RF on-demand.

For additional information on this product, please click the following link: [Transfer Electromechanical Relay Latching Switch, +COM, DC to 43 GHz, 10W, 12VDC, 2.92mm FMSW6579](#)

URL: <https://www.fairviewmicrowave.com/transfer-latching-43-ghz-electro-mechanical-relay-switch-12v-2.92mm-fm-sw6579-p.aspx>

The information contained in this document is accurate to the best of our knowledge and representative of the part described herein. It may be necessary to make modifications to the part and/or the documentation of the part, in order to implement improvements. Fairview Microwave reserves the right to make such changes as required. Unless otherwise stated, all specifications are nominal. Fairview Microwave does not make any representation or warranty regarding the suitability of the part described herein for any particular purpose, and Fairview Microwave does not assume any liability arising out of the use of any part or documentation.





| ZONE | | REVISION | | DATE | | APPROVED | |
|------|-----|-------------|-----------------|------------|------------|----------|--------|
| A | REV | DESCRIPTION | INITIAL RELEASE | DATE | CHANGED BY | APPROVED | TGALLA |
| A | | | | 02/17/2023 | DMAY | | |

Fairview Microwave®
an INFINITE® brand

Website: www.FairviewMicrowave.com
Phone: 1.800.715.4396 | 1.972.649.6678

INTERPRET ALL DIMENSIONS AND TOLERANCES PER ASME Y14.5 SHEET SCALE NONE

DESCRIPTION
TRAN, 2.92mm, LATCHING, +COM, 43GHz, 12VDC, SOLDER TERMINAL

SIZE A CAGE CODE 3FKR5 DRAWN BY DMAY ITEM NO. FMSW6579 REV A

UNLESS OTHERWISE SPECIFIED LEADING DIMENSIONS ARE IN INCHES DIMENSIONS IN [] ARE MILLIMETERS

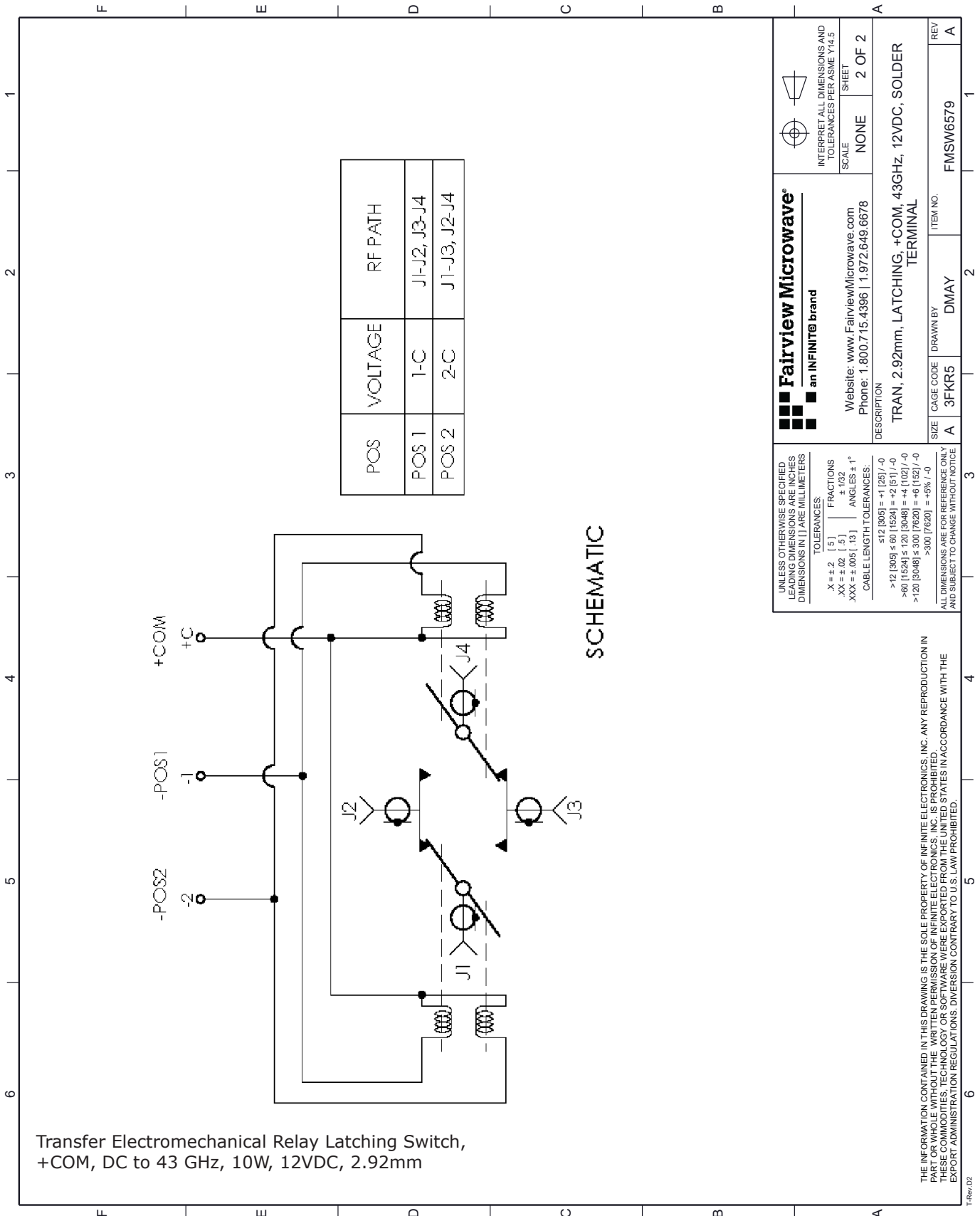
TOLERANCES:
 .X = ±.2 [5]
 .XX = ±.02 [5]
 .XXX = ±.005 [13]
 FRACTIONS ± 1/32
 ANGLES ± 1°

CABLE LENGTH TOLERANCES:
 ≤12 [305] = ±1 [25] / -0
 >12 [305] ≤ 60 [1524] = +2 [51] / -0
 >60 [1524] ≤ 120 [3048] = +4 [102] / -0
 >120 [3048] ≤ 300 [7620] = +6 [152] / -0
 >300 [7620] = +5% / -0

ALL DIMENSIONS ARE FOR REFERENCE ONLY AND SUBJECT TO CHANGE WITHOUT NOTICE

NOTES:
1. LABEL PER ILS-100-02, FOR INTERNAL REFERENCE ONLY, LABEL LOCATION FOR REFERENCE ONLY.

THE INFORMATION CONTAINED IN THIS DRAWING IS THE SOLE PROPERTY OF INFINITE ELECTRONICS, INC. ANY REPRODUCTION IN PART OR WHOLE WITHOUT THE WRITTEN PERMISSION OF INFINITE ELECTRONICS, INC. IS PROHIBITED. THESE COMMODITIES, TECHNOLOGY OR SOFTWARE WERE EXPORTED FROM THE UNITED STATES IN ACCORDANCE WITH THE EXPORT ADMINISTRATION REGULATIONS. DIVISION CONTRARY TO U.S. LAW PROHIBITED.



| | | | | | | | | | | | | | | | | | | | |
|---|---|--|---------|--------|-----------|-----------|--------|--------|-------------|---------|-------------|-----------|---------------|------------|--------------|-------------|--------------|-------------|--------------|
| <p>Fairview Microwave an INFINIT[®] brand</p> <p>Website: www.FairviewMicrowave.com Phone: 1.800.715.4396 1.972.649.6678</p> | <p>INTERPRET ALL DIMENSIONS AND TOLERANCES PER ASME Y14.5</p> <p>SCALE: NONE</p> <p>SHEET: 2 OF 2</p> | <p>UNLESS OTHERWISE SPECIFIED, LEADING DIMENSIONS ARE IN INCHES AND DIMENSIONS IN [] ARE IN MILLIMETERS</p> <p>TOLERANCES:</p> <table style="font-size: small;"> <tr> <td>.X ± .2</td> <td>[.5]</td> <td>FRACTIONS</td> </tr> <tr> <td>.XX ± .02</td> <td>[.5]</td> <td>± 1/32</td> </tr> <tr> <td>.XXX ± .005</td> <td>[.13]</td> <td>ANGLES ± 1°</td> </tr> </table> <p>CABLE LENGTH TOLERANCES:</p> <table style="font-size: small;"> <tr> <td>>12 [305]</td> <td>± .125 [-0]</td> </tr> <tr> <td>>60 [1524]</td> <td>± .25 [-0]</td> </tr> <tr> <td>>120 [3048]</td> <td>± .50 [-0]</td> </tr> <tr> <td>>300 [7620]</td> <td>± 1.0 [-0]</td> </tr> </table> <p>ALL DIMENSIONS ARE FOR REFERENCE ONLY AND SUBJECT TO CHANGE WITHOUT NOTICE</p> | .X ± .2 | [.5] | FRACTIONS | .XX ± .02 | [.5] | ± 1/32 | .XXX ± .005 | [.13] | ANGLES ± 1° | >12 [305] | ± .125 [-0] | >60 [1524] | ± .25 [-0] | >120 [3048] | ± .50 [-0] | >300 [7620] | ± 1.0 [-0] |
| .X ± .2 | [.5] | FRACTIONS | | | | | | | | | | | | | | | | | |
| .XX ± .02 | [.5] | ± 1/32 | | | | | | | | | | | | | | | | | |
| .XXX ± .005 | [.13] | ANGLES ± 1° | | | | | | | | | | | | | | | | | |
| >12 [305] | ± .125 [-0] | | | | | | | | | | | | | | | | | | |
| >60 [1524] | ± .25 [-0] | | | | | | | | | | | | | | | | | | |
| >120 [3048] | ± .50 [-0] | | | | | | | | | | | | | | | | | | |
| >300 [7620] | ± 1.0 [-0] | | | | | | | | | | | | | | | | | | |
| <p>DESCRIPTION: TRAN, 2.92mm, LATCHING, +COM, 43GHz, 12VDC, SOLDER TERMINAL</p> | | | | | | | | | | | | | | | | | | | |
| SIZE: A | CAGE CODE: 3FKR5 | ITEM NO.: FMSW6579 | | | | | | | | | | | | | | | | | |
| REV: A | DRAWN BY: DMAY | REV: A | | | | | | | | | | | | | | | | | |