

## WR-137 Waveguide Rotary Joint, CPR137F Flanges, L-Style in Brass

### Description

Waveguide rotary joints are used to connect waveguide components which need to rotate or change orientation during operation within a waveguide system. Designed to perform in harsh operating environment, FMW137RJ001 from Fairview is a WR-137 waveguide rotary joint that operates in the frequency range of 5.85 GHz to 6.72 GHz. This WR-137 waveguide rotary joint has a Max VSWR of 1.25:1. This waveguide rotary joint is made of painted brass and incorporates CPR137F/CPR137G flange interface with maximum rotary speed of 30 RPM and minimum life time of  $500 \times 10^4$  Revolutions. Waveguide rotary joints are part of Fairview's comprehensive waveguide product offerings which are available in stock and ready for same-day shipment.

### Electrical Specifications

Description	Min	Typ	Max	Units
Frequency Range	5.85		6.72	GHz
VSWR			1.25:1	
VSWR 1, Rotational Variance			0.05	
Insertion Loss			0.3	dB
Input Power (CW)			1	kWatts
Peak Power			10	kWatts
Insertion Loss Rotational Variance			0.05	dB
Phase Rotational Variance			2	Degrees

### Mechanical Specifications

#### Temperature

Operating Temperature	-40 to 70 °C
Storage Temperature	-55 to 85 °C
Humidity	85% (Max)

#### Interface

Waveguide Size	WR-137
Flange Type 1	CPR-137F
Flange Type 2	CPR-137G
Body Material and Plating	Brass, Paint
Rotating Speed	30 RPM
Lifetime	$500 \times 10^4$ Revolutions
Starting Torque	2.65 in-lbs [0.3 Nm]
Torque During Rotation	1.77 in-lbs [0.2 Nm]
IP Protection Level	IP64



### Features:

- WR-137 Waveguide
- Operating Frequency Range from 5.85 GHz to 6.72 GHz
- CPR137F/CPR137G Flanges
- L-Style Configuration
- 1.25:1 Max VSWR
- 1000 Watts (CW) Max Power Handling
- Insertion loss(Max): 0.3 dB
- Rotating Speed (Max): 30 RPM
- Lifetime (Min):  $500 \times 10^4$  Revolutions

### Applications:

- Radar Systems
- Military and Space
- Wireless Radio Systems
- Communication Systems
- R&D Labs
- Maritime Waveguide Systems

Fairview Microwave  
 301 Leora Ln., Suite 100  
 Lewisville, TX 75056  
 Tel: 1-800-715-4396 / (972) 649-6678  
 Fax: (972) 649-6689  
[www.fairviewmicrowave.com](http://www.fairviewmicrowave.com)  
[sales@fairviewmicrowave.com](mailto:sales@fairviewmicrowave.com)

**Compliance Certifications** (see [product page](#) for current document)

### Plotted and Other Data

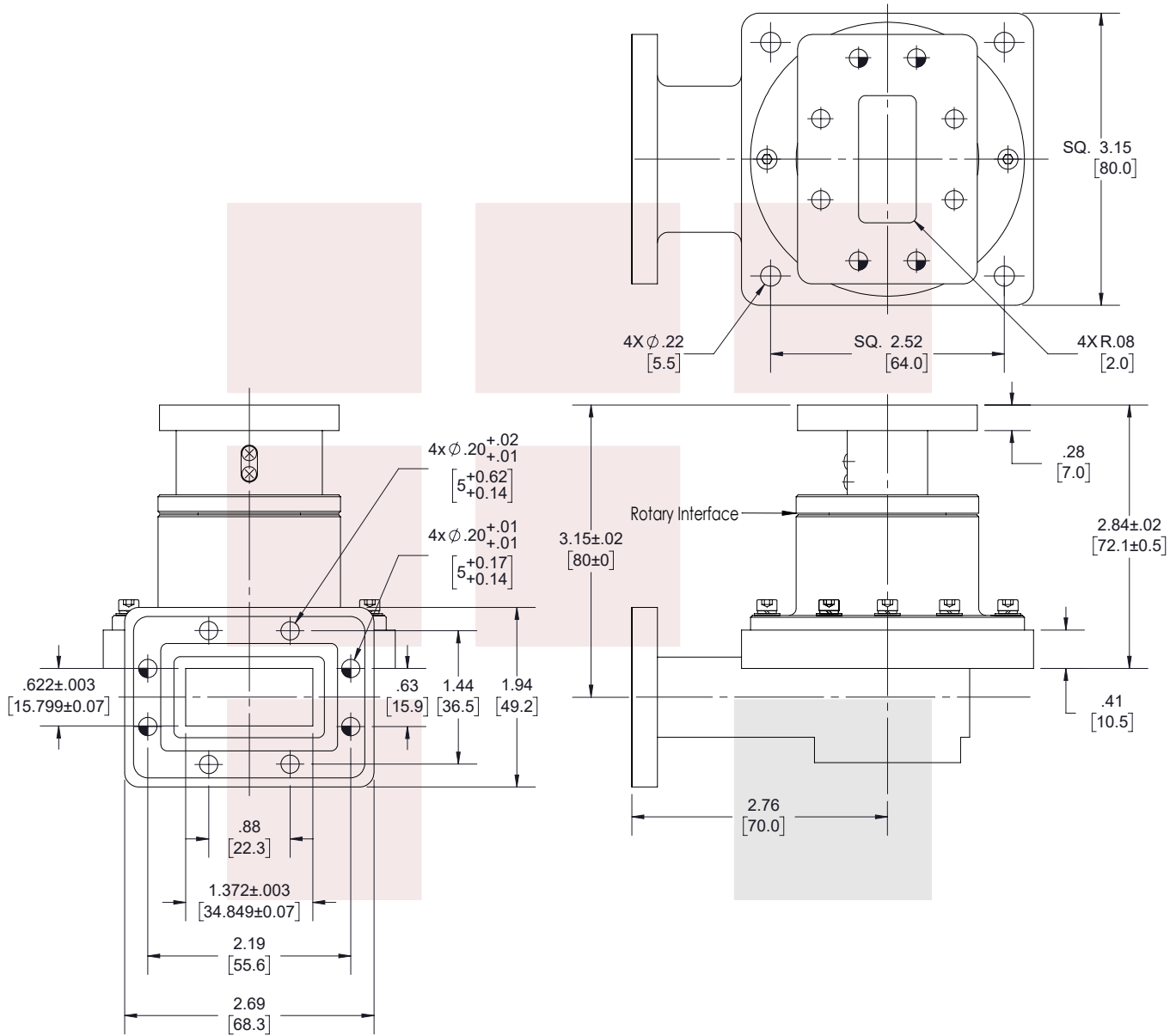
WR-137 Waveguide Rotary Joint, CPR137F Flanges, L-Style in Brass from Fairview Microwave is in-stock and available to ship same-day. All of our RF/microwave products are available off-the-shelf from our ISO 9001:2008 certified facilities in Lewisville, Texas. Fairview Microwave is RF on-demand.

For additional information on this product, please click the following link: [WR-137 Waveguide Rotary Joint, CPR137F Flanges, L-Style in Brass FMW137RJ0001](#)

URL: <https://www.fairviewmicrowave.com/undefined-url-for-pn-fmw137rj0001-fmw137rj0001-p.aspx>

The information contained in this document is accurate to the best of our knowledge and representative of the part described herein. It may be necessary to make modifications to the part and/or the documentation of the part, in order to implement improvements. Fairview Microwave reserves the right to make such changes as required. Unless otherwise stated, all specifications are nominal. Fairview Microwave does not make any representation or warranty regarding the suitability of the part described herein for any particular purpose, and Fairview Microwave does not assume any liability arising out of the use of any part or documentation.

REVISIONS			
REV.	DESCRIPTION	DATE	APPROVED
A	INITIAL RELEASE	10/04/2021	SPONG



THESE COMMODITIES, TECHNOLOGY OR SOFTWARE WERE EXPORTED FROM THE UNITED STATES IN ACCORDANCE WITH THE EXPORT ADMINISTRATION REGULATIONS. DIVERSION CONTRARY TO U.S. LAW PROHIBITED.

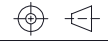
TITLE  
WR-137 Waveguide Rotary Joint, CPR137F Flanges,  
L-Style in Brass

UNLESS OTHERWISE SPECIFIED LEADING DIMENSIONS ARE INCHES  
DIMENSIONS IN [ ] ARE MILLIMETERS

TOLERANCES: CABLE LENGTH (L) TOLERANCES:

.X = ±.2 [5.08]	FRACTIONS	L ≤ 12 [305] = +1 [25] / -0
.XX = ±.02 [.51]	± 1/32	12 [305] < L ≤ 60 [1524] = +2 [51] / -0
.XXX = ±.005 [.13]	ANGLES ± 1°	60 [1524] < L ≤ 120 [3048] = +4 [102] / -0
		120 [3048] < L ≤ 300 [7620] = +6 [152] / -0
		300 [7620] < L = +5%L / -0

THIRD-ANGLE PROJECTION



THE INFORMATION AND DESIGN IN THIS DOCUMENT IS THE PROPERTY OF FAIRVIEW MICROWAVE CORPORATION. ALL RIGHTS RESERVED.

SHEET 1 OF 1

ALL DIMENSIONS SHOWN ARE FOR REFERENCE ONLY.

SCALE N/A

SIZE A	CAGE CODE 3FKR5	DRAWN BY MVEERAPPAN	ITEM NO. FMW137RJ0001	REV A
-----------	--------------------	------------------------	--------------------------	----------

T-Rev.D