

WR-28 2 Way Waveguide Power Divider From 33.7 GHz to 34.7 GHz UG Square Cover Flange, Brass

Fairview Microwave carries a wide selection of waveguide power dividers to fit your needs. These components are essential in many systems, allowing the combination of multiple signals or splitting of a single signal into multiple signals with equal magnitude and phase. The FMW28DV001 is a 2-way waveguide power divider that operates from 33.7 to 34.7 GHz and can handle up to 3 Watts (CW) with 0.4 dB max insertion loss and 17 dB min isolation. The package uses WR-28 waveguide interface.



Electrical Specifications

Number of Output Ports

2

Description	Min	Typ	Max	Units
Frequency Range	33.7		34.7	GHz
Input VSWR			1.25:1	
Output VSWR			1.25:1	
Insertion Loss			0.4	dB
Isolation	17			dB
Amplitude Balance			0.2	dB
Phase Balance			3	Degrees
Input Power (CW)			3	Watts
Input Power (Peak)			2	kWatts

Features:

- 2-Way Waveguide Power Divider
- WR-28 Waveguide Interface
- 33.7 to 34.7 GHz Frequency Range
- Max Power 3 Watts (CW)
- Insertion Loss 0.4 dB max
- Isolation 17 dB min

Applications:

- Test Benches
- Radar/Satellite
- Microwave Radio
- Attenuation Measurements
- Power Measurements

Mechanical Specifications

Size

Length	1.11 in [28.19 mm]
Width	1.42 in [36.07 mm]
Height	1.16 in [29.46 mm]
Weight	1.08 lbs [489.88 g]

Housing Material and Plating: Copper, Gray

Configuration

Input Waveguide Size	WR-28
Input Flange Designation	FBP320
Input Flange Type	UG Cover
Output Waveguide Size	WR-28
Output Flange Type	UG Cover

Compliance Certifications (see [product page](#) for current document)

Plotted and Other Data

Notes:

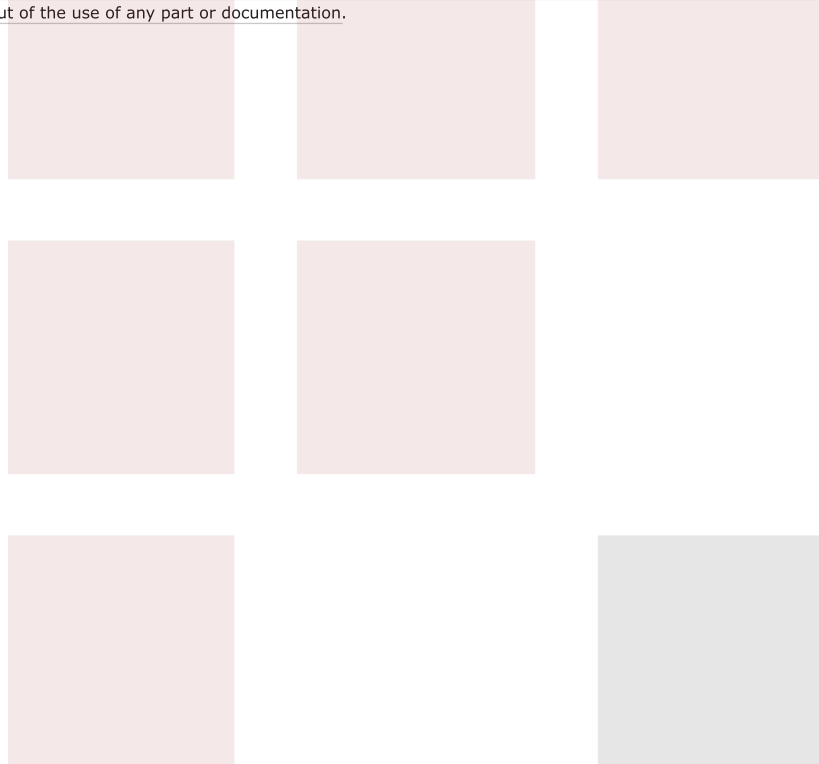
Fairview Microwave
 301 Leora Ln., Suite 100
 Lewisville, TX 75056
 Tel: 1-800-715-4396 / (972) 649-6678
 Fax: (972) 649-6689
www.fairviewmicrowave.com
sales@fairviewmicrowave.com

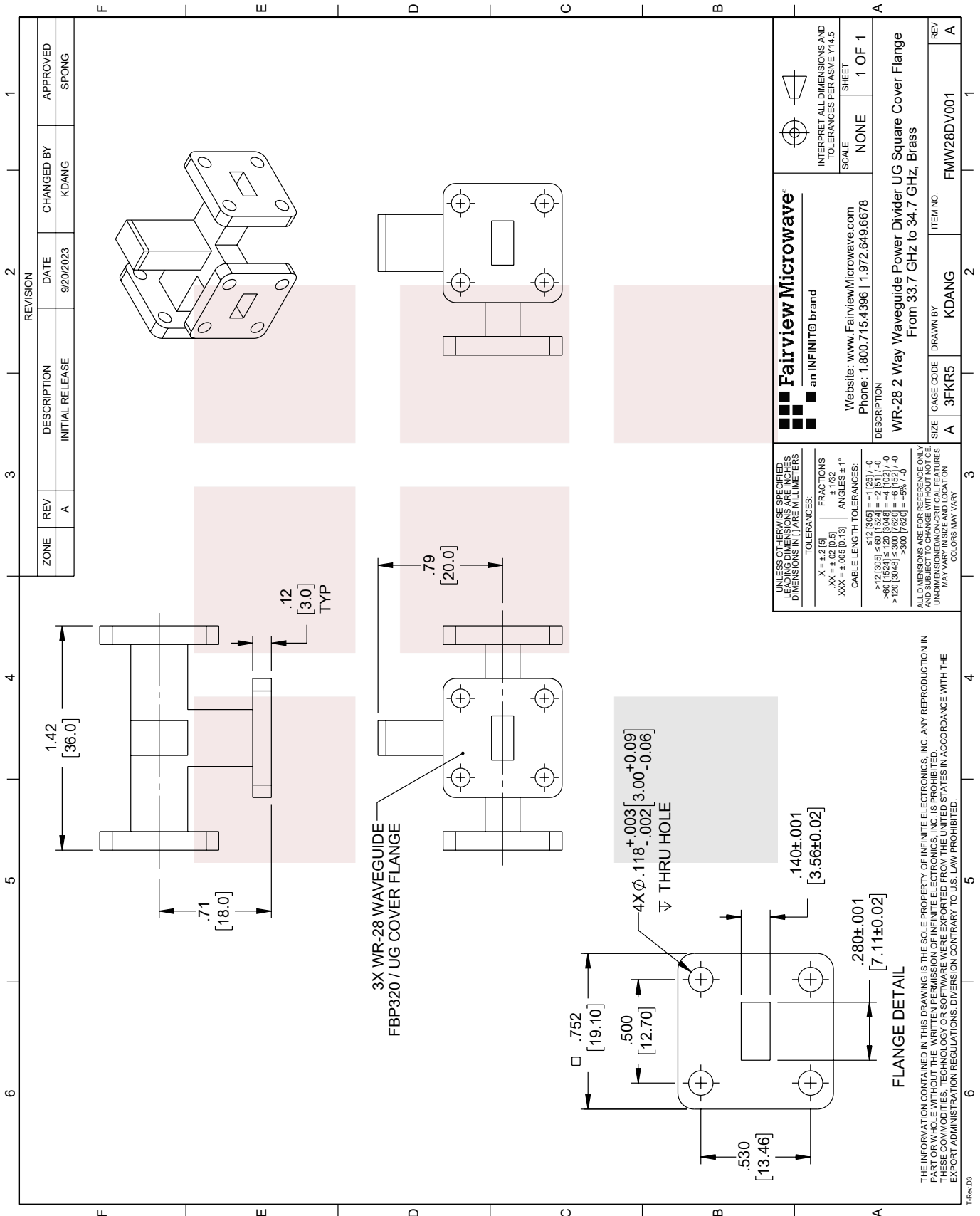
WR-28 2 Way Waveguide Power Divider From 33.7 GHz to 34.7 GHz UG Square Cover Flange, Brass from Fairview Microwave is in-stock and available to ship same-day. All of our RF/microwave products are available off-the-shelf from our ISO 9001:2008 certified facilities in Lewisville, Texas. Fairview Microwave is RF on-demand.

For additional information on this product, please click the following link: [WR-28 2 Way Waveguide Power Divider From 33.7 GHz to 34.7 GHz UG Square Cover Flange, Brass FMW28DV001](#)

URL: <https://www.fairviewmicrowave.com/undefined-url-for-pn-fmw28dv001-fmw28dv001-p.aspx>

The information contained in this document is accurate to the best of our knowledge and representative of the part described herein. It may be necessary to make modifications to the part and/or the documentation of the part, in order to implement improvements. Fairview Microwave reserves the right to make such changes as required. Unless otherwise stated, all specifications are nominal. Fairview Microwave does not make any representation or warranty regarding the suitability of the part described herein for any particular purpose, and Fairview Microwave does not assume any liability arising out of the use of any part or documentation.





ZONE		REV	DESCRIPTION	DATE	CHANGED BY	APPROVED
		A	INITIAL RELEASE	9/20/2023	KDANG	SPONG

REVISION	
1	APPROVED
2	CHANGED BY
3	DATE
4	9/20/2023
5	KDANG
6	SPONG

Fairview Microwave
an INFINIT[®] brand

Website: www.FairviewMicrowave.com
Phone: 1.800.715.4396 | 1.972.649.6678

INTERPRET ALL DIMENSIONS AND TOLERANCES PER ASME Y14.5
SCALE: NONE
SHEET: 1 OF 1

DESCRIPTION:
WR-28 2 Way Waveguide Power Divider UG Square Cover Flange
From 33.7 GHz to 34.7 GHz, Brass

SIZE: A
CAGE CODE: 3FKR5
DRAWN BY: KDANG
ITEM NO.: FMW28DV001
REV: A

UNLESS OTHERWISE SPECIFIED, LEADING DIMENSIONS ARE IN INCHES, DIMENSIONS IN [] ARE MILLIMETERS.

TOLERANCES:
 .X = ±.2 [5]
 .XX = ±.02 [0.5]
 .XXX = ±.005 [0.13]

FRACTIONS: ± 1/32
 ANGLES: ± 1°

CABLE LENGTH TOLERANCES:
 ≤ 12 [305] = +1 [25] / -0
 ≤ 12 [305] ≤ 60 [1524] = +2 [51] / -0
 ≤ 60 [1524] ≤ 300 [7620] = +6 [152] / -0
 > 300 [7620] = +300 [7620] = +5% / -0

ALL DIMENSIONS ARE FOR REFERENCE ONLY AND SUBJECT TO CHANGE WITHOUT NOTICE. UNDIMENSIONED NON-CRITICAL FEATURES MAY VARY IN SIZE AND LOCATION. COLORS MAY VARY.

THE INFORMATION CONTAINED IN THIS DRAWING IS THE SOLE PROPERTY OF INFINITE ELECTRONICS, INC. ANY REPRODUCTION IN PART OR WHOLE WITHOUT THE WRITTEN PERMISSION OF INFINITE ELECTRONICS, INC. IS PROHIBITED. THESE COMMODITIES, TECHNOLOGY OR SOFTWARE WERE EXPORTED FROM THE UNITED STATES IN ACCORDANCE WITH THE EXPORT ADMINISTRATION REGULATIONS. DIVERSION CONTRARY TO U.S. LAW PROHIBITED.

T-Rev.D3