

WR-510 Waveguide Standard Gain Horn Antenna Operating From 1.45 GHz to 2.2 GHz, 15 dBi Gain with CPR-510F Flange

The FMWAN510-15 standard horn antenna (also known as waveguide horn) from Fairview is part of our comprehensive selection of waveguide antennas. This WR-510 waveguide horn features an CPR-510F waveguide flange and operates from 1450 to 2200 MHz.

Our FMWAN510-15 standard gain horn antenna has a nominal gain of 15 dBi with a typical input VSWR of 1.5:1. Fairview's waveguide horns are available in 10, 15, and 20 dBi models with varying frequency ranges to suit the application needs.

Waveguide antennas, such as the FMWAN510-15 are used in a wide variety of applications due to the high-power handling capability, low loss, high directivity, and near constant electrical performance. Our WR-510 waveguide antennas with are part of over 40,000 RF, microwave, and millimeter wave components from Fairview available worldwide and Ship same day.

Configuration

Design	WR-510 Standard Gain Horn
Pattern	Directional
Polarization	Linear

Electrical Specifications

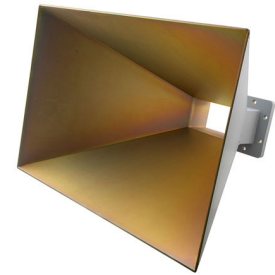
Description	Min	Typ	Max	Units
Frequency Range	1.45		2.2	GHz
Nominal Gain		15		dBi
Horizontal 3dB Beam Width		30		Deg
Vertical 3dB Beam Width		30		Deg
VSWR			1.5:1	

Mechanical Specifications

Size	
Length	14.4 in [365.76 mm]
Width/Diameter	18 in [457.2 mm]
Height	12.4 in [314.96 mm]
Weight	7.056 lbs [3.2 kg]

Waveguide Interface

Waveguide Size	WR-510
Flange Type	CPR-510F
Body Material and Plating	Aluminum



Features:

- 1450 MHz to 2200 MHz
- Linearly Polarized
- 15 dBi Nominal Gain
- WR-510 with CPR-510F Flange
- Powder Coated Aluminum

Applications:

- Antenna Measurements
- Wireless Communication
- Laboratory Use
- Microwave Testing
- Radome Testing
- EMC measurement
- Satellite Antenna Testing

Compliance Certifications (see [product page](#) for current document)

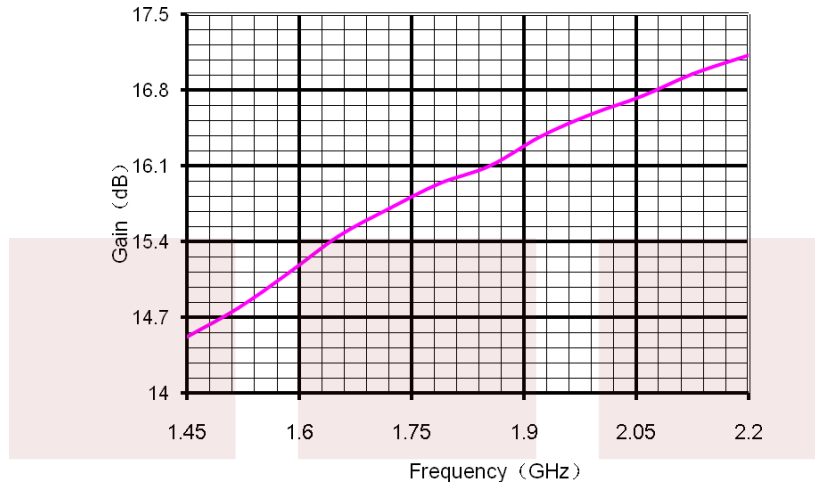
Plotted and Other Data

Notes:

Fairview Microwave
 301 Leora Ln., Suite 100
 Lewisville, TX 75056
 Tel: 1-800-715-4396 / (972) 649-6678
 Fax: (972) 649-6689
www.fairviewmicrowave.com
sales@fairviewmicrowave.com

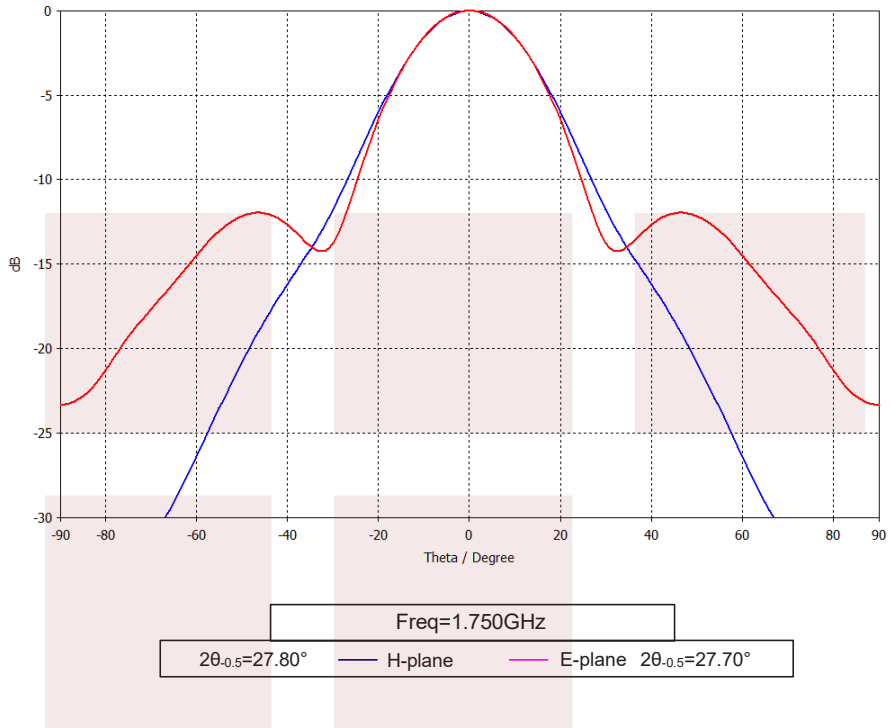
Typical Performance Data

Gain VS Frequency Curve:



Freq	Gain	Freq	Gain
1.45 GHz	14.52 dB	1.86 GHz	16.10 dB
1.52 GHz	14.78 dB	1.92 GHz	16.37 dB
1.59 GHz	15.10 dB	1.99 GHz	16.58 dB
1.65 GHz	15.45 dB	2.06 GHz	16.74 dB
1.72 GHz	15.70 dB	2.13 GHz	16.95 dB
1.79 GHz	15.94 dB	2.20 GHz	17.13 dB

Typical Pattern:



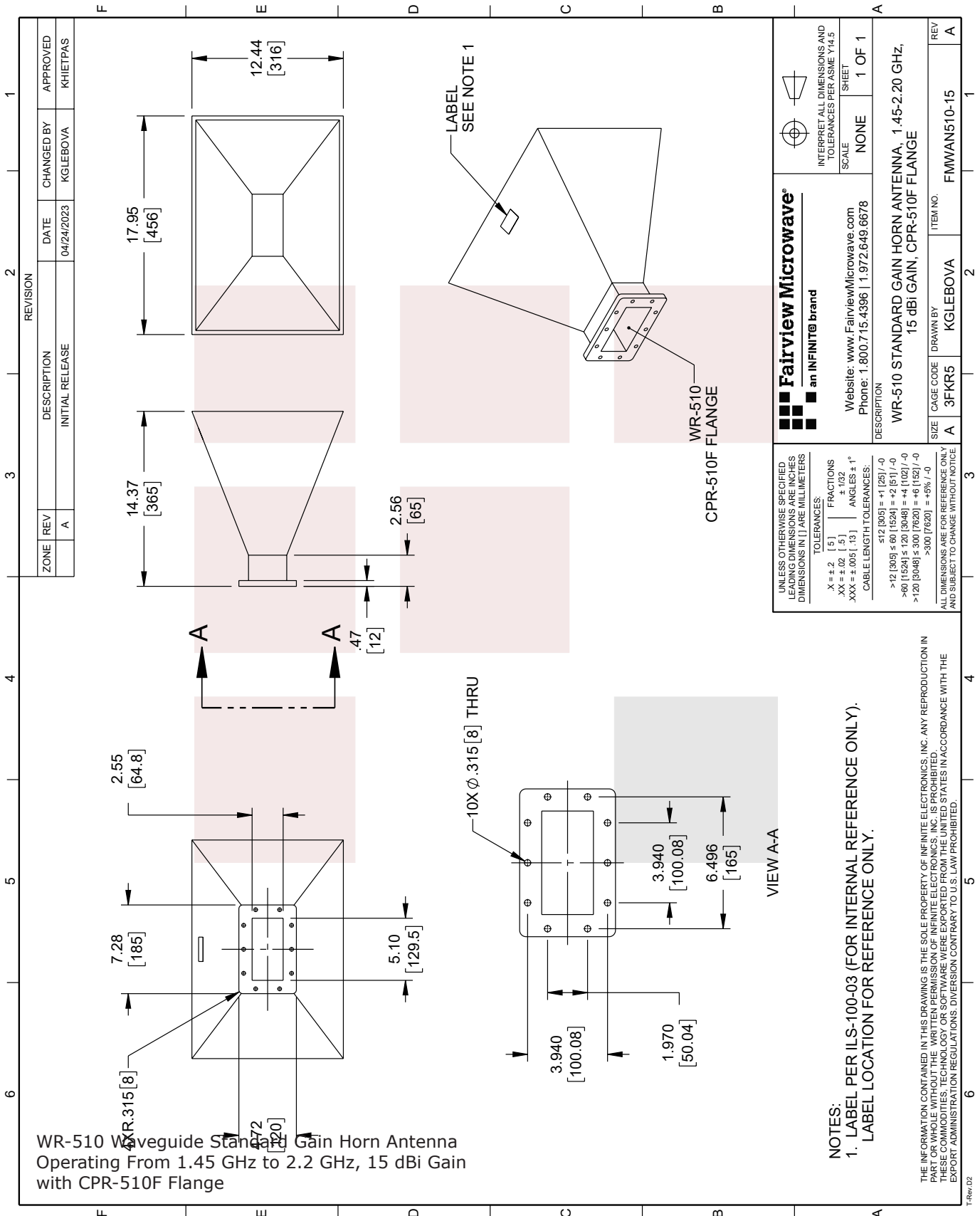
WR-510 Waveguide Standard Gain Horn Antenna Operating From 1.45 GHz to 2.2 GHz, 15 dBi Gain with CPR-510F Flange from Fairview Microwave is in-stock and available to ship same-day. All of our RF/microwave products are available off-the-shelf from our ISO 9001:2008 certified facilities in Lewisville, Texas. Fairview Microwave is RF on-demand.

For additional information on this product, please click the following link: [WR-510 Waveguide Standard Gain Horn Antenna Operating From 1.45 GHz to 2.2 GHz, 15 dBi Gain with CPR-510F Flange FMWAN510-15](#)

URL: <https://www.fairviewmicrowave.com/wr-510-waveguide-standard-gain-horn-antenna-operating-from-1.45-ghz-to-2.2-ghz-15-dbi-gain-with-cpr-510f-flange-fmwan510-15-p.aspx>

The information contained in this document is accurate to the best of our knowledge and representative of the part described herein. It may be necessary to make modifications to the part and/or the documentation of the part, in order to implement improvements. Fairview Microwave reserves the right to make such changes as required. Unless otherwise stated, all specifications are nominal. Fairview Microwave does not make any representation or warranty regarding the suitability of the part described herein for any particular purpose, and Fairview Microwave does not assume any liability arising out of the use of any part or documentation.





WR-510 Waveguide Standard Gain Horn Antenna
Operating From 1.45 GHz to 2.2 GHz, 15 dBi Gain
with CPR-510F Flange

<p>Fairview Microwave an INFINIT[®] brand</p> <p>Website: www.FairviewMicrowave.com Phone: 1.800.715.4396 1.972.649.6678</p>		<p>INTERPRET ALL DIMENSIONS AND TOLERANCES PER ASME Y14.5</p> <p>SCALE NONE</p> <p>SHEET 1 OF 1</p>
<p>DESCRIPTION</p> <p>WR-510 STANDARD GAIN HORN ANTENNA, 1.45-2.20 GHz, 15 dBi Gain, CPR-510F FLANGE</p>		
SIZE	CAGE CODE	ITEM NO.
A	3FKR5	FMWAN510-15
REV	DRAWN BY	REV
A	KGLEBOVA	A

UNLESS OTHERWISE SPECIFIED LEADING DIMENSIONS ARE IN INCHES DIMENSIONS IN [] ARE MILLIMETERS

TOLERANCES:

.X ± .2 [5] FRACTIONS
 .XX ± .02 [5] ± .132
 .XXX ± .005 [.13] ANGLES ± 1°

CABLE LENGTH TOLERANCES:

≤ 12 [305] ± .125 [-0]
 > 12 [305] ≤ 60 [1524] = +2 [51] / -0
 > 60 [1524] ≤ 120 [3048] = +4 [102] / -0
 > 120 [3048] ≤ 300 [7620] = +6 [152] / -0
 > 300 [7620] = +5% / -0

ALL DIMENSIONS ARE FOR REFERENCE ONLY AND SUBJECT TO CHANGE WITHOUT NOTICE

NOTES:
 1. LABEL PER ILS-100-03 (FOR INTERNAL REFERENCE ONLY). LABEL LOCATION FOR REFERENCE ONLY.

THE INFORMATION CONTAINED IN THIS DRAWING IS THE SOLE PROPERTY OF INFINITE ELECTRONICS, INC. ANY REPRODUCTION IN PART OR WHOLE WITHOUT THE WRITTEN PERMISSION OF INFINITE ELECTRONICS, INC. IS PROHIBITED. THESE COMMODITIES, TECHNOLOGY OR SOFTWARE WERE EXPORTED FROM THE UNITED STATES IN ACCORDANCE WITH THE EXPORT ADMINISTRATION REGULATIONS. DIVERSION CONTRARY TO U.S. LAW PROHIBITED.