

## WR-112 Square Type Flange to End Launch SMA Female Waveguide to Coax Adapter Operating from 7.05 GHz to 10 GHz

The FMWCA9865 is a waveguide to coaxial adapter operating in the H band with a 7.05 to 10 GHz frequency range. This adapter offers a WR-112 waveguide interface size coupled with a precision tolerance Square Type flange. The FMWCA9865 is constructed of aluminum to ensure durability and repeatable RF performance. The SMA Female connector mates with commercially available 2.92mm and 3.5mm connectors.

### Configuration

Waveguide Size	WR-112
Flange	Square Type
RF Connector	SMA Female
Impedance	50 Ohms
Body Geometry	End Launch

### Electrical Specifications

Description	Min	Typ	Max	Units
Frequency Range	7.05		10	GHz
VSWR			1.4:1	

### Mechanical Specifications

#### Size

Length	1.94 in [49.28 mm]
Width	1.88 in [47.75 mm]
Height	1.88 in [47.75 mm]
Weight	0.3 lbs [136.08 g]

#### RF Connector

Connector Type	SMA Female
Body Material and Plating	Passivated Stainless Steel

#### Waveguide Interface

Waveguide Type	WR-112
Flange Type	Square Type
Body Material and Plating	Aluminum

### Environmental Specifications

#### Temperature

Operating Range	-40 to +85 deg C
-----------------	------------------

### Compliance Certifications (see [product page](#) for current document)

### Plotted and Other Data

#### Notes:

- Values at +25 °C, sea level unless stated otherwise



### Features:

- 7.05 to 10 GHz Frequency Range
- WR-112 Waveguide Interface
- Square Type Flange
- SMA Female RF Interface
- End Launch

### Applications:

- Test Benches
- Radar
- Satellite
- Microwave Radio Systems
- Military and Space
- Communication Systems

Fairview Microwave  
 301 Leora Ln., Suite 100  
 Lewisville, TX 75056  
 Tel: 1-800-715-4396 / (972) 649-6678  
 Fax: (972) 649-6689  
[www.fairviewmicrowave.com](http://www.fairviewmicrowave.com)  
[sales@fairviewmicrowave.com](mailto:sales@fairviewmicrowave.com)

WR-112 Square Type Flange to End Launch SMA Female Waveguide to Coax Adapter Operating from 7.05 GHz to 10 GHz from Fairview Microwave is in-stock and available to ship same-day. All of our RF/microwave products are available off-the-shelf from our ISO 9001:2008 certified facilities in Lewisville, Texas. Fairview Microwave is RF on-demand.

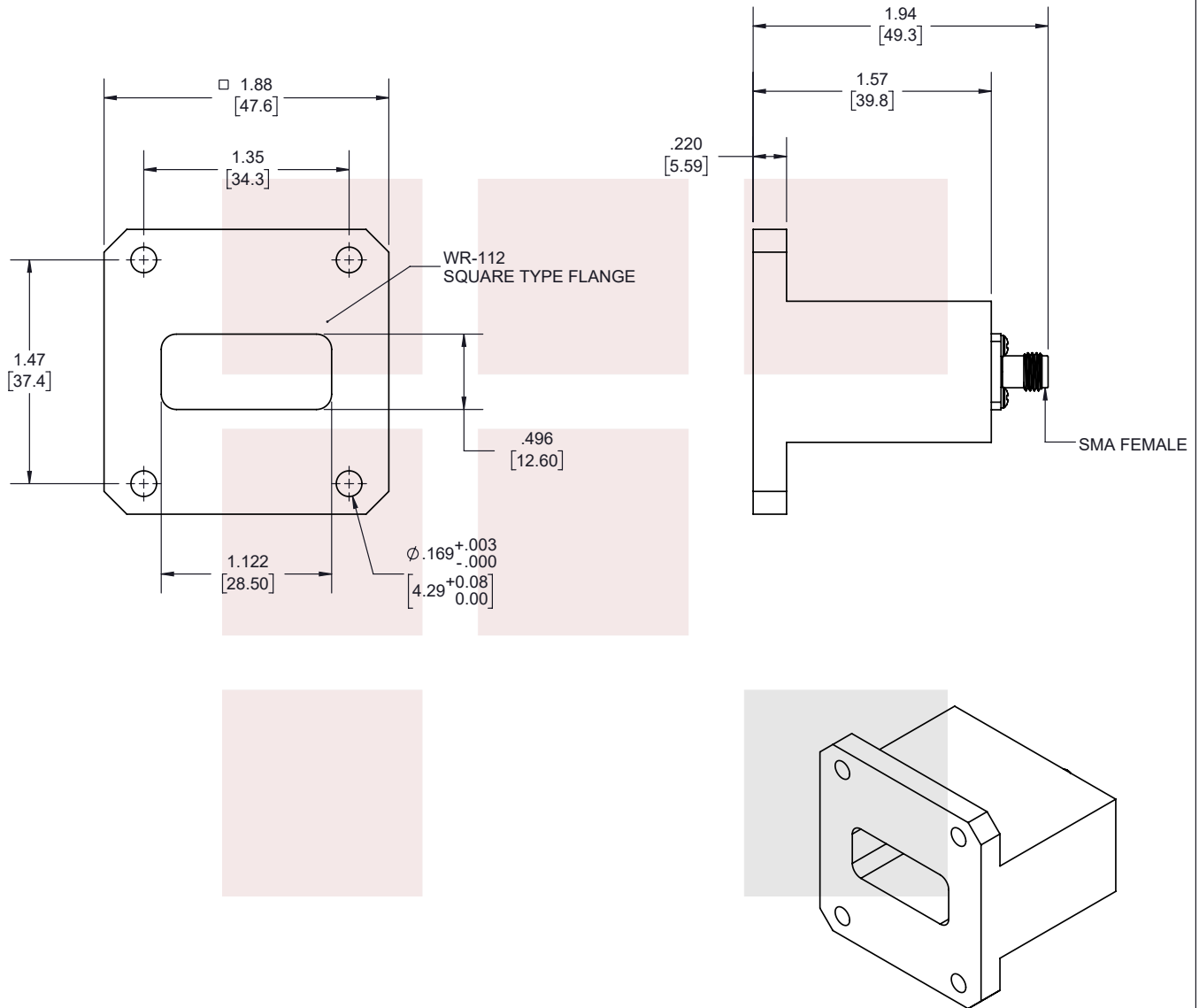
For additional information on this product, please click the following link: [WR-112 Square Type Flange to End Launch SMA Female Waveguide to Coax Adapter Operating from 7.05 GHz to 10 GHz FMWCA9865](#)

URL: <https://www.fairviewmicrowave.com/wr112-sma-female-end-launch-waveguide-coax-adapter-square-fmwca9865-p.aspx>

The information contained in this document is accurate to the best of our knowledge and representative of the part described herein. It may be necessary to make modifications to the part and/or the documentation of the part, in order to implement improvements. Fairview Microwave reserves the right to make such changes as required. Unless otherwise stated, all specifications are nominal. Fairview Microwave does not make any representation or warranty regarding the suitability of the part described herein for any particular purpose, and Fairview Microwave does not assume any liability arising out of the use of any part or documentation.



REVISIONS			
REV.	DESCRIPTION	DATE	APPROVED
A	INITIAL RELEASE	3/16/2022	S. PONG



THESE COMMODITIES, TECHNOLOGY OR SOFTWARE WERE EXPORTED FROM THE UNITED STATES IN ACCORDANCE WITH THE EXPORT ADMINISTRATION REGULATIONS. DIVERSION CONTRARY TO U.S. LAW PROHIBITED.

TITLE  
WR-112 Square Type Flange to End Launch SMA Female Waveguide to Coax Adapter Operating from 7.05 GHz to 10 GHz

UNLESS OTHERWISE SPECIFIED LEADING DIMENSIONS ARE INCHES DIMENSIONS IN [ ] ARE MILLIMETERS		THIRD-ANGLE PROJECTION
<p>TOLERANCES:</p> <p>.X = ± 0.02 [0.51] FRACTIONS ± 1/32 .XX = ± 0.02 [0.51] ANGLES ± 1° .XXX = ± 0.005 [0.13]</p>		<p>THE INFORMATION AND DESIGN IN THIS DOCUMENT IS THE PROPERTY OF FAIRVIEW MICROWAVE CORPORATION. ALL RIGHTS RESERVED.</p>
<p>CABLE LENGTH (L) TOLERANCES:</p> <p>L ≤ 12 [305] = +1 [25] / -0 12 [305] &lt; L ≤ 60 [1524] = +2 [51] / -0 60 [1524] &lt; L ≤ 120 [3048] = +4 [102] / -0 120 [3048] &lt; L ≤ 300 [7620] = +6 [152] / -0 300 [7620] &lt; L = +5%L / -0</p>		SHEET 1 OF 1
ALL DIMENSIONS SHOWN ARE FOR REFERENCE ONLY.		
SIZE A	CAGE CODE 3FKR5	SCALE N/A
DRAWN BY K.DANG	ITEM NO. FMWCA9865	REV A

T-Rev.D