

WRD-650 Waveguide Section 6 Inch Straight Length with UG Square Cover Flange from 6.5 GHz to 18 GHz in Brass



FMWRD650S001-6

Features

- 6" Length
- WRD-650 Double Ridge Waveguide
- UG Flange
- 6.5 GHz to 18 GHz Frequency Range
- Comprehensive waveguide offering also includes E-Bends, H-Bends, Waveguide to Coax Adapters, Filters, Terminations, and more.

Applications

- Millimeter Wave
- Transmission Systems
- Test and Laboratory Setups

Description

Fairview Microwave's FMWRD650S001-6 is a 6 inch WRD-650 straight double ridge waveguide section that operates from 6.5 GHz to 18 GHz. This straight waveguide section offers a max 1.15:1 VSWR. The input of this straight waveguide section has a UG Flange. FMWRD650S001-6 is part of over 40,000 RF, microwave and millimeter wave components offered at Fairview Microwave. WRD-650 straight waveguide section will ship worldwide the same day it is purchased along with our other RF components.

Electrical Specifications

Description	Minimum	Typical	Maximum	Units
Frequency Range	6.5		18	GHz
VSWR			1.15:1	
Insertion Loss Max		0.4		dB

Mechanical Specifications

Waveguide Size	WRD-650
Section Length	6 in [152.4 mm]

Description	Flange 1	Waveguide	Flange 2
Flange Type	Square Cover		Square Cover
Flange Designation	UG	WRD-650	UG
Material	Brass	Copper	Brass
Color	Gold	Gray	Gray

Size	
Weight	1 lbs [453.59 g]

Compliance Certifications (see [product page](#) for current document)

Plotted and Other Data

- Notes:
- Values at +25 °C, sea level

WRD-650 Waveguide Section 6 Inch Straight Length with UG Square Cover Flange from 6.5 GHz to 18 GHz in Brass



FMWRD650S001-6

WRD-650 Waveguide Section 6 Inch Straight Length with UG Square Cover Flange from 6.5 GHz to 18 GHz in Brass from Fairview Microwave is in-stock and available to ship same-day. All of our RF/microwave products are available off-the-shelf from our ISO 9001:2008 certified facilities in Lewisville, Texas. Fairview Microwave is RF on-demand.

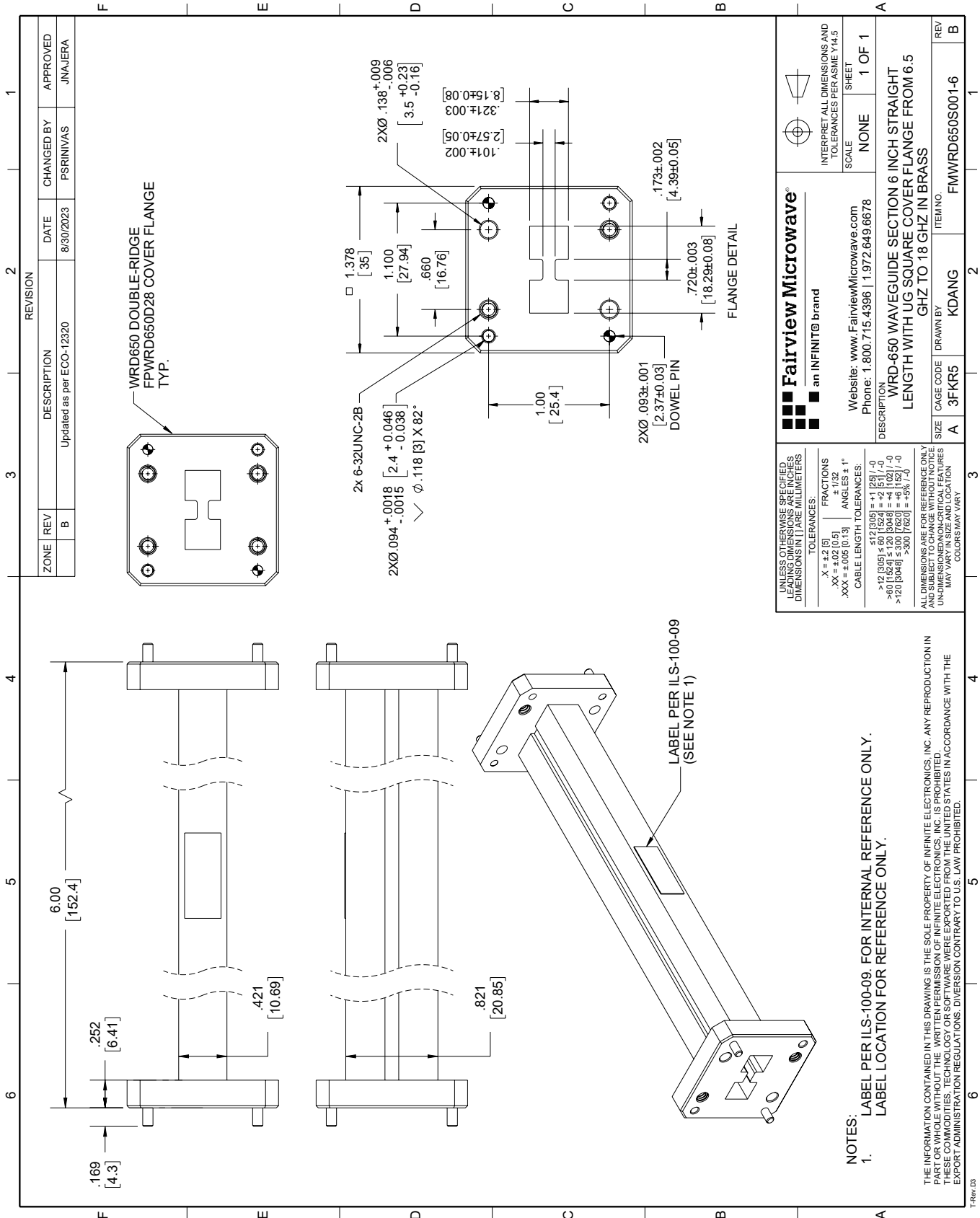
For additional information on this product, please click the following link: [WRD-650 Waveguide Section 6 Inch Straight Length with UG Square Cover Flange from 6.5 GHz to 18 GHz in Brass FMWRD650S001-6](#)

URL: <https://www.fairviewmicrowave.com/wrd-650-waveguide-section-straight-ug-square-fmwr650s001-6-p.aspx>

The information contained within this document is accurate to the best of our knowledge and representative of the part described herein. It may be necessary to make modifications to the part and/or the documentation of the part in order to implement improvements. Fairview Microwave reserves the right to make such changes as required. Unless otherwise stated, all specifications are nominal. Fairview Microwave does not make any representation or warranty regarding the suitability of the part described herein for any particular purpose, and Fairview Microwave does not assume liability arising out of the use of any part or document.

FMWRD650S001-6 CAD Drawing

WRD-650 Waveguide Section 6 Inch Straight Length with UG Square Cover Flange from 6.5 GHz to 18 GHz in Brass



ZONE	REV	DESCRIPTION	DATE	CHANGED BY	APPROVED
	B	Updated as per ECO-12320	8/30/2023	PSRINIVAS	JNAJERA

Fairview Microwave
an INFINIT® brand

Website: www.FairviewMicrowave.com
Phone: 1.800.715.4396 | 1.972.649.6678

DESCRIPTION: WRD-650 WAVEGUIDE SECTION 6 INCH STRAIGHT LENGTH WITH UG SQUARE COVER FLANGE FROM 6.5 GHZ TO 18 GHZ IN BRASS

SCALE: NONE
SHEET: 1 OF 1

INTERPRET ALL DIMENSIONS AND TOLERANCES PER ASME Y14.5

SIZE	A	3FKR5	3
CAGE CODE	DRAWN BY		
ITEM NO.	ITEM NO.	ITEM NO.	ITEM NO.
FMWRD650S001-6	FMWRD650S001-6	FMWRD650S001-6	FMWRD650S001-6

UNLESS OTHERWISE SPECIFIED, DIMENSIONS ARE IN INCHES AND DECIMAL FRACTIONS. DIMENSIONS IN PARENTHESES ARE IN MILLIMETERS.

TOLERANCES:

X = ±.2 (5)	FRACTIONS ± 1/32
.XX = ±.02 (0.5)	ANGLES ± 1°
.XXX = ±.005 (0.13)	

CABLE LENGTH TOLERANCES:

<12 (305)	±.01 (0.25)
>12 (305) < 60 (1524)	±.02 (0.51)
>60 (1524) < 120 (3048)	±.04 (1.02)
>120 (3048) < 300 (7620)	±.06 (1.52)
>300 (7620)	±.08 (2.03)

ALL DIMENSIONS ARE FOR REFERENCE ONLY UNLESS OTHERWISE SPECIFIED. DIMENSIONS ON CRITICAL FEATURES MAY VARY IN SIZE AND LOCATION. COLORS MAY VARY.

NOTES:

- LABEL PER ILS-100-09. FOR INTERNAL REFERENCE ONLY. LABEL LOCATION FOR REFERENCE ONLY.

THE INFORMATION CONTAINED IN THIS DRAWING IS THE SOLE PROPERTY OF INFINITE ELECTRONICS, INC. ANY REPRODUCTION IN PART OR WHOLE WITHOUT THE WRITTEN PERMISSION OF INFINITE ELECTRONICS, INC. IS PROHIBITED. THESE COMMODITIES, TECHNOLOGY OR SOFTWARE WERE EXPORTED FROM THE UNITED STATES IN ACCORDANCE WITH THE EXPORT ADMINISTRATION REGULATIONS. DIVERSION CONTRARY TO U.S. LAW PROHIBITED.

T-Rev_03