

1.8 inches Edge Length, Trihedral Corner Reflector, Gray



FMWRL0180

Features

- 1.8" Edge Length
- Compact Size
- High RCS
- Rugged Configuration
- Painted Finish
- 10 to 100 GHz
- Tripod Mountable

Applications

- Radars
- Radar System Calibration
- Surveillance Equipment
- Radar Target Simulator
- Radar System Evaluation
- Test Chamber
- Communication Systems

Description

The FMWRL0180 from Fairview Microwave, stands as an advanced trihedral corner reflector tailored for precise applications within antennas and radar systems. With a compact edge length of 1.8 inches, this reflector is meticulously engineered with a trihedral geometry to ensure optimal signal reflection and minimal signal loss. The trihedral corner reflector antenna simulates radar target precisely and is widely used for Radar system calibration. Its exterior is coated with a robust gray powder coat finish, presenting a professional appearance while safeguarding against environmental elements.

Internally, the reflector features a gold chemical film finish, strategically applied to enhance conductivity and elevate overall performance. Adhering to rigorous industry standards, the 1.8 inches Edge Length FMWRL0180 by Fairview Microwave guarantees reliability and exceptional signal reflectivity. The addition of a 1/4-20 UNC threaded hole facilitates straightforward and secure mounting to a tripod, enabling versatile deployment across various testing and measurement scenarios. Whether utilized in research, development, or field applications, Fairview Microwave's FMWRL0180 exemplifies precision engineering and technological innovation in the realm of antenna and radar technology. Our trihedral corner reflectors are part of over 40,000 RF, microwave, and millimeter wave components from Fairview available worldwide and ship same day.

Product Configuration

Design	Trihedral Corner Reflector
Body Material	Aluminum
Color	Gray
Reflector Surface	Gold chem film

Mechanical Specifications

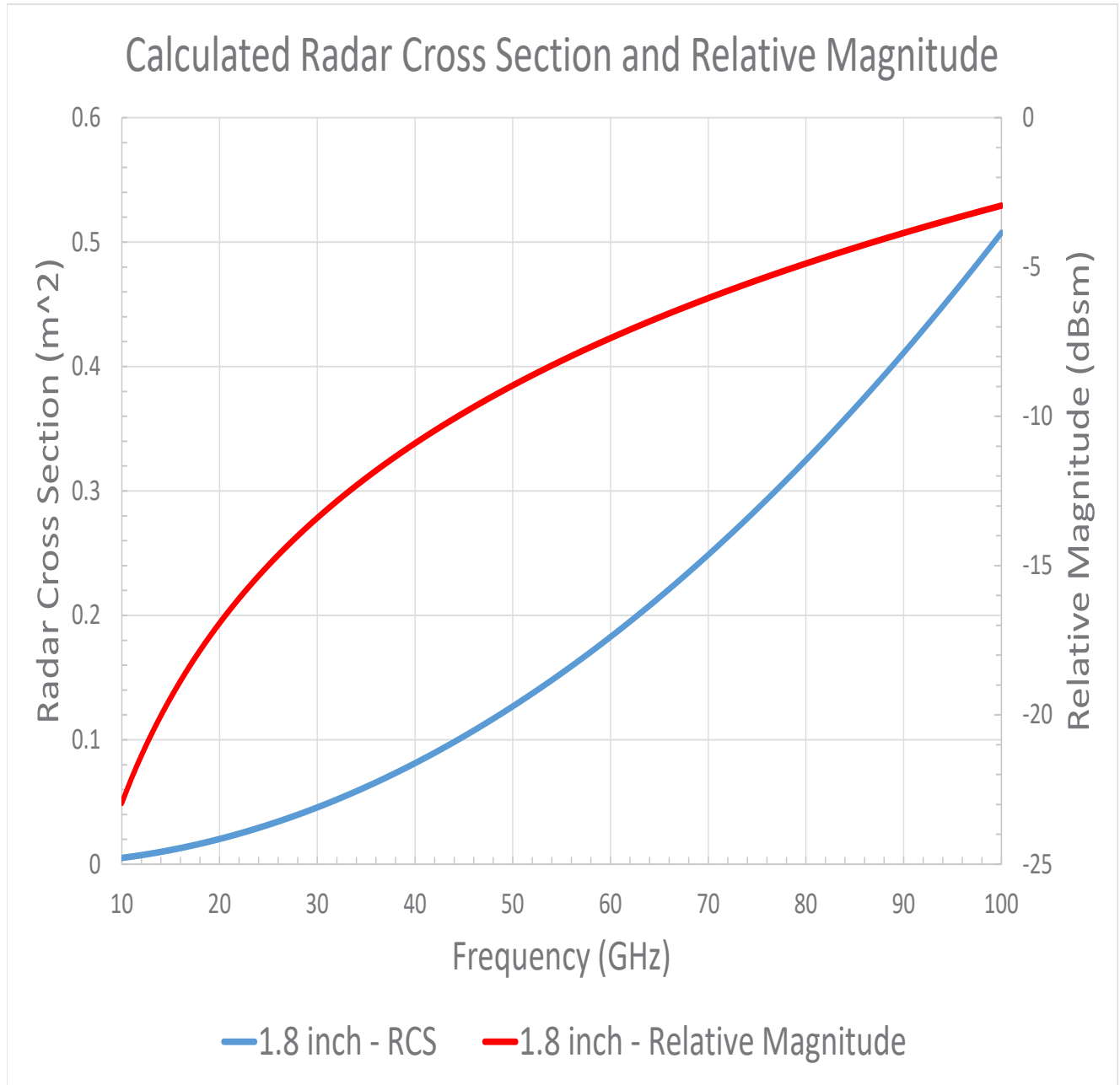
Size	
Edge Length	1.8 in [45.72 mm]
Length	1.811 in [46 mm]
Width	0.871 in [22.12 mm]
Height	1.799 in [45.69 mm]
Weight	0.055 lbs [24.95 g]

1.8 inches Edge Length, Trihedral Corner Reflector, Gray



FMWRL0180

Plotted and Other Data



1.8 inches Edge Length, Trihedral Corner Reflector, Gray

FMWRL0180



1.8 inches Edge Length, Trihedral Corner Reflector, Gray from Fairview Microwave is in-stock and available to ship same-day. All of our RF/microwave products are available off-the-shelf from our ISO 9001:2008 certified facilities in Lewisville, Texas. Fairview Microwave is RF on-demand.

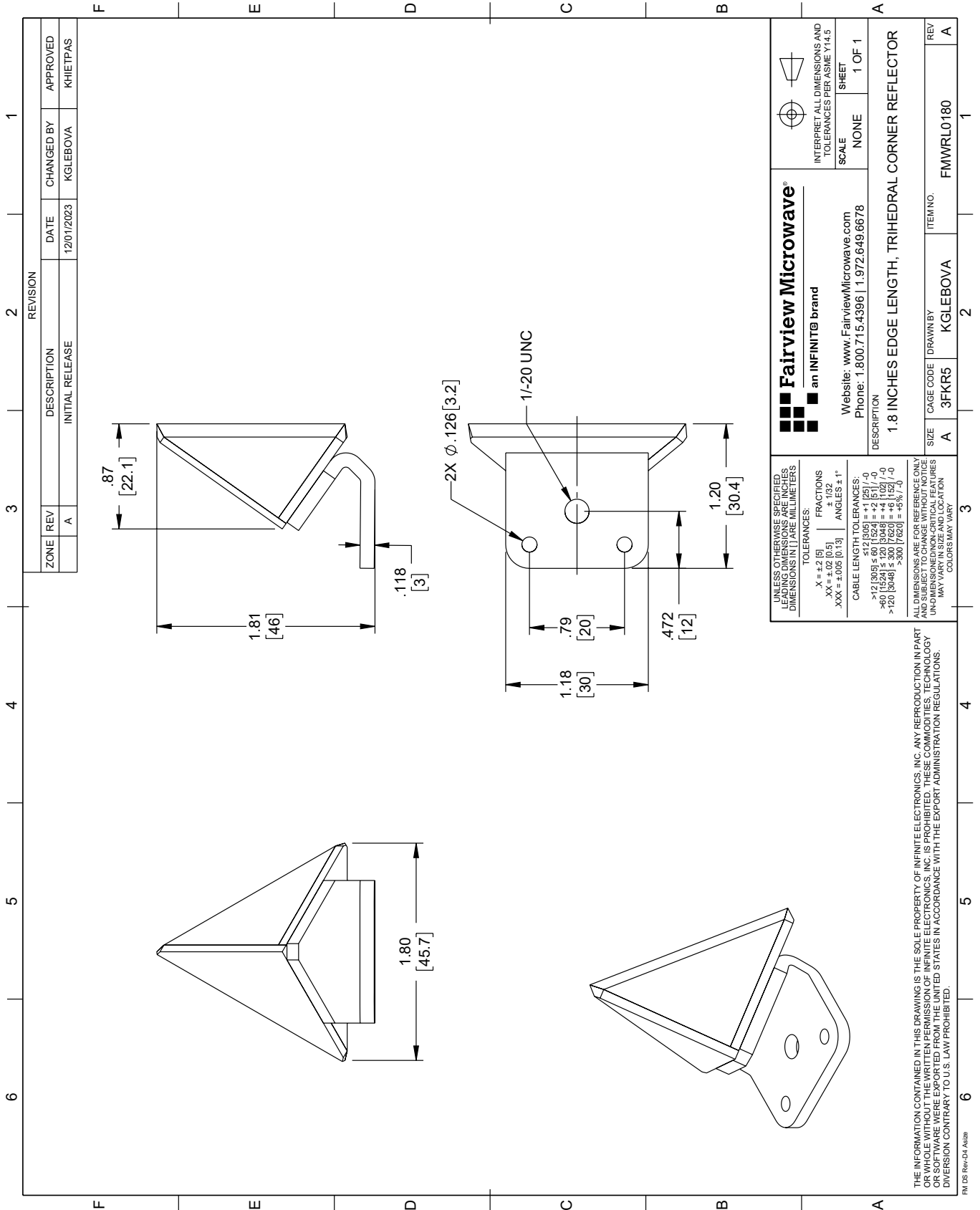
For additional information on this product, please click the following link: [1.8 inches Edge Length, Trihedral Corner Reflector, Gray FMWRL0180](#)

URL: <https://www.fairviewmicrowave.com/1.8-inches-edge-length-trihedral-corner-reflector-fmwrl0180-p.aspx>

The information contained within this document is accurate to the best of our knowledge and representative of the part described herein. It may be necessary to make modifications to the part and/or the documentation of the part in order to implement improvements. Fairview Microwave reserves the right to make such changes as required. Unless otherwise stated, all specifications are nominal. Fairview Microwave does not make any representation or warranty regarding the suitability of the part described herein for any particular purpose, and Fairview Microwave does not assume liability arising out of the use of any part or document.

FMWRL0180 CAD Drawing

1.8 inches Edge Length, Trihedral Corner Reflector, Gray



ZONE	REV	DESCRIPTION	DATE	CHANGED BY	APPROVED
	A	INITIAL RELEASE	12/01/2023	KGLEBOVA	KHIEPPAS

Fairview Microwave
an INFINITI® brand

Website: www.FairviewMicrowave.com
Phone: 1.800.715.4396 | 1.972.649.6678

UNLESS OTHERWISE SPECIFIED, LEADING DIMENSIONS ARE IN INCHES AND DIMENSIONS IN [] ARE MILLIMETERS.

TOLERANCES:
 .X = ±.2 [5]
 .XX = ±.02 [0.5]
 .XXX = ±.005 [0.13]

FRACTIONS ± 1/32
 ANGLES ± 1°

CABLE LENGTH TOLERANCES:
 <12 [305] ≤ 60 [1524] = ±.1 [25] / -0
 >60 [1524] ≤ 120 [3048] = ±.4 [102] / -0
 >120 [3048] ≤ 300 [7620] = ±.6 [15] / -0

ALL DIMENSIONS ARE FOR REFERENCE ONLY. UNLESS OTHERWISE SPECIFIED, DIMENSIONS ARE IN INCHES AND DIMENSIONS IN [] ARE MILLIMETERS. COLORS MAY VARY.

THE INFORMATION CONTAINED IN THIS DRAWING IS THE SOLE PROPERTY OF INFINITE ELECTRONICS, INC. ANY REPRODUCTION IN PART OR WHOLE WITHOUT THE WRITTEN PERMISSION OF INFINITE ELECTRONICS, INC. IS PROHIBITED. THESE COMMODITIES, TECHNOLOGY OR SOFTWARE ARE EXPORTED FROM THE UNITED STATES IN ACCORDANCE WITH THE EXPORT ADMINISTRATION REGULATIONS. DIVERSION CONTRARY TO U.S. LAW PROHIBITED.

FAIRVIEW MICROWAVE
 SCALE: NONE
 SHEET: 1 OF 1

INTERPRET ALL DIMENSIONS AND TOLERANCES PER ASME Y14.5

REV	DESCRIPTION	DATE	CHANGED BY	APPROVED
A	INITIAL RELEASE	12/01/2023	KGLEBOVA	KHIEPPAS